

Two Bedrooms and Affordable 40 m² (428 ft²) Living Space for \$15,900



All our raw materials are mass produced on advanced production lines. The profile fabrication and panel gluing is done by CNC equipment to the highest precision. The finished components are shipped flat packed to the building site. The building is erected by unskilled labor at speeds never achieved before and without a costly crane. To reduce labor we eliminated 95% of all fasteners. All components interlock with each other. We incorporate automotive style seals to eliminate caulking. Layouts can be done in increments of 1.3m (4.4ft). Expansions are easy. No limit to room size, the maximum height is 10 floors. Our buildings resist water, corrosion, mold and fire. They are strong enough to survive a substantial earthquake or a CAT 5 hurricane. We use shock absorbers every 1.3m and repeat this on every floor.



**Our 46 House
Assembles in
2 hours**

4 Panels x 6 Panels



[Website: mmc-3.com](http://www.mmc-3.com)

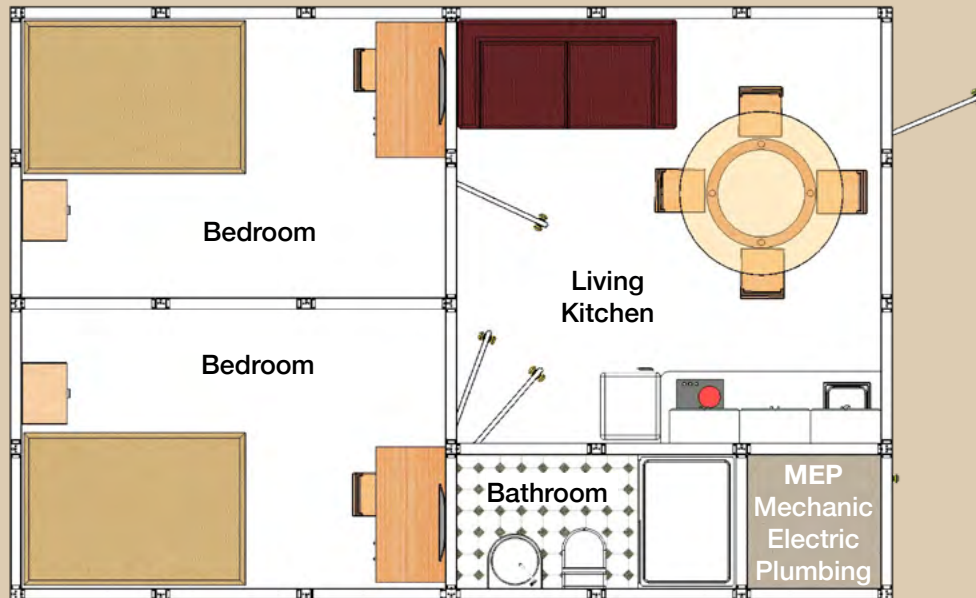
Manufactured Modular Construction

[Email: info@mmc-3.com](mailto:info@mmc-3.com)





Comparison between On-Site, Off-Site Modular and MMC	ON SITE	OFF SITE	MMC
Same timber frame building technology used for 200 years	Yes	Yes	No
Advanced composite materials of superior strength and durability	No	No	Yes
Building assembled	On Site	Off Site	On Site
Waste	A Lot	Less	None
Transportation cost	Low	High	Low
Crane rental	No	Yes	No
Building cost	High	20% Less	75% Less
Building Time	High	20-40% Less	95% Less
Room size restriction	No	Yes	No
Quality Control	Poor	Better	Best
Life span	40 years	40 years	120 Years
Customization	Best	Limited	Limited



Specifications:	
Foot Print	8.1 m x 5.4 m (26.5 ft x 18 ft)
Living Space	40 m ² (428 ft ²)
Horizontal Structures	Aluminum and FRP
Vertical Structures	FRP (Fiber Reinforced Polymer)
Composite Wall Panels	Aluminum Composite Panel, Aluminum Frame, Polyurethane Foam Core
Smart Home Technology	Programmable Wall Touch Screens and Smart Phone App
Lighting - Electric	LED - Wire Harness
Building Kit with Full Bathroom	\$ 15,900 (FOB Honduras)
Full Kitchen (Cabinets, Sink, Ceramic Top Stove)	\$ 1,500
Sea Freight to US (Texas or Florida)	\$ 1,000

**Low cost construction does not need to be inferior.
Our technology exceeds most building technologies in strength and durability**